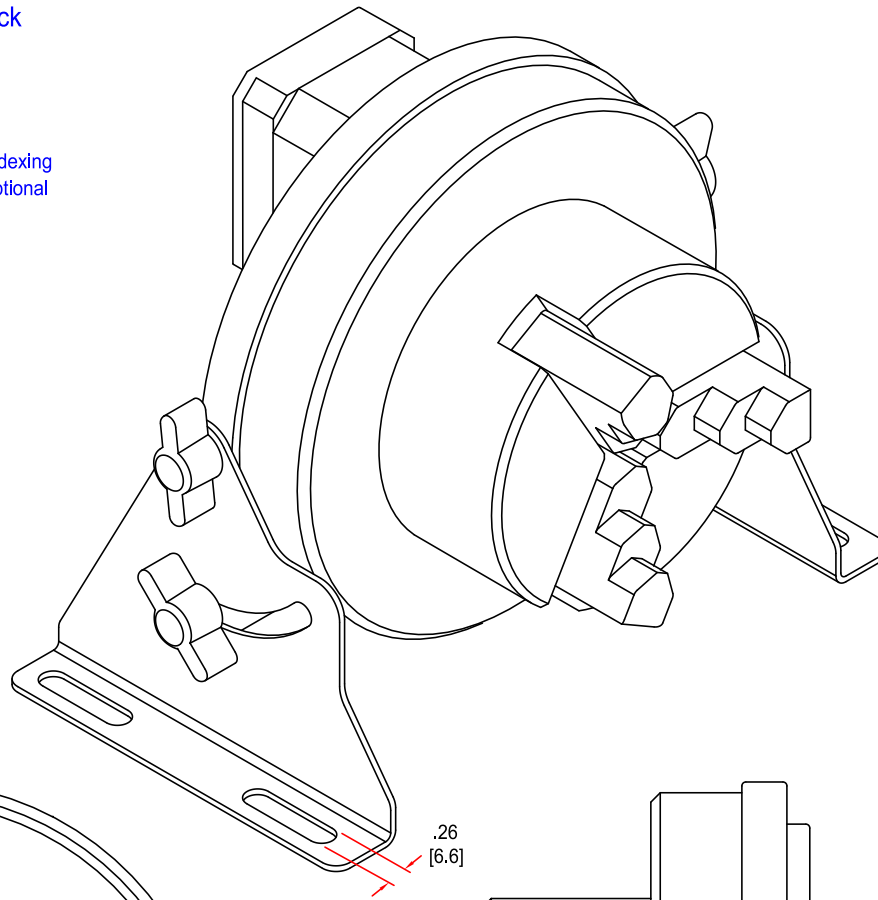
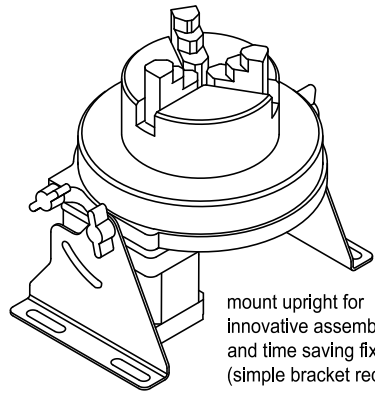


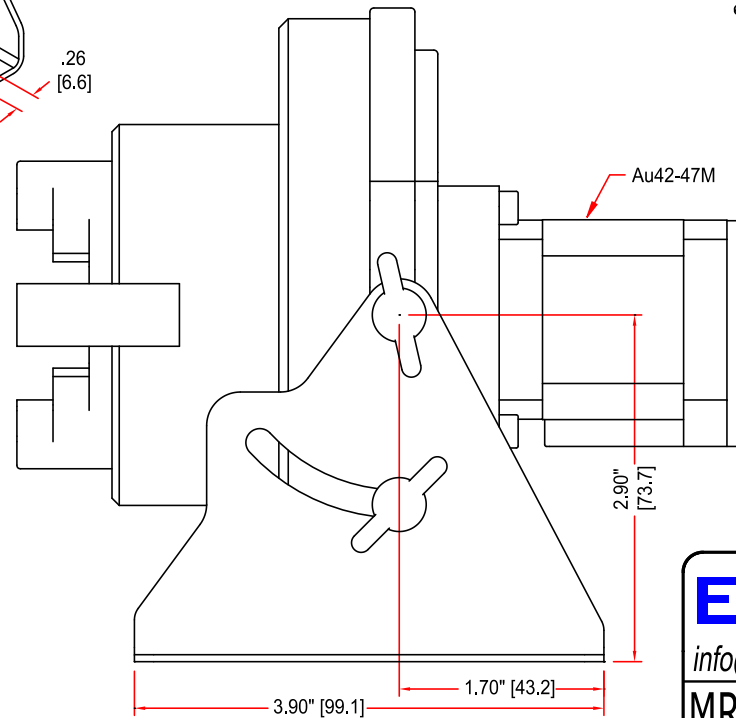
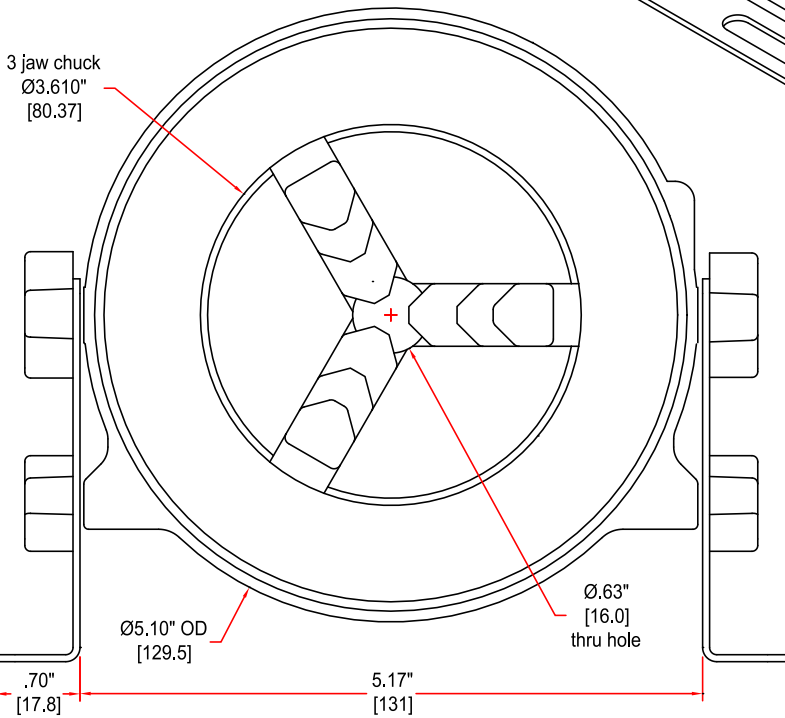
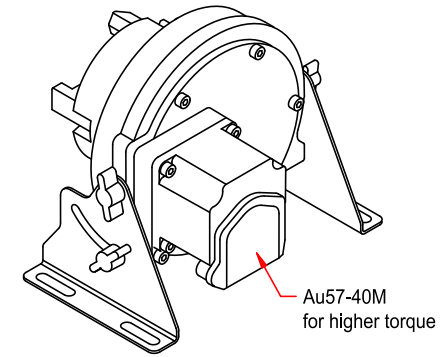
Excitron MRC3-42-47M-13 Rotary Chuck

- Self-centering 3 dependent jaw rotary chuck
- High precision, strong and rugged
- Tilt and lock 0° to +45°
- Many uses for Lab, testing, marking, and assembly
- Full features for automatic or manual rotation and indexing
- Intelligent gold plated Au42-47M motor/controller, optional larger motor Au57-40M with 2X torque
- Small compact size, only weighs 7 pounds
- Extremely low backlash, 2-4 arc-min



Features

- High resolution--one motor half-step is 2 arc min
- 10,800 motor half-steps per revolution and 13.5 gear ratio gives an even 30 motor half-steps per degree
- Output speed range is 0.6 to 60 rpm
- East to set torque limit, ideal for assembly fixture
- Home sensor for accurate repeat indexing
- Versatile standalone control, such as CNC step/dir, input pins, stop/go, and analog speed on-the-fly, see manual for details
- Mount to a vertical surface
- Torque up to 60 in-lb
- Includes 6 jaws (3 inside and 3 outside), jaw wrench, universal 85-250 VAC 50/60 hz power supply (not shown), AC cord, RS232 6' serial cable, I/O cable (open ended)



MRC3-57-40M-13
shown 50% scale

EXCITRON
info@excitron.com 303-859-9476
MRC3-42-47M-13
www.excitron.com 100% 1 / 1 Rev. 1