

Excitron Planetary Gear Heads

LOW BACKLASH PLANETARY GEAR REDUCER



FEATURES

- ☆ **High Speed Input, High Torque Output** - unique design combines spur input with planetary output gears for optimum performance.
- ☆ **Integral Gear Ratio** – Ratio available from 3:1 through 100:1.
- ☆ **Quiet, Low Backlash** - 6 arc-minutes standard and 3 arc-minutes optional.
- ☆ **High Efficiency** - precision gears made to create efficiency above 90%.
- ☆ **Mounts in any Orientation** - All grease-filled, the gear head can be used in any orientation.

SPECIFICATIONS

DESCRIPTION MODEL	Continuous Output Torque	Maximum Torque of Load	Radius Load on Output Shaft	Gear Reducer Inertia	Range of Output Shaft Diameter of Servomotor	1 Stage Weight	2 Stage Weight
PG42	1. kgF-M	2.0 KgF-M	45KgF	.0.22Kg-Cm ²	2-9 mm	.0.7Kg	1.2Kg
PG57	1.5 kgF-M	3.0 KgF-M	60KgF	0.31Kg-Cm ²	3-14 mm	1.0Kg	1.7Kg
PG86	7.0 kgF-M	14.0 KgF-M	150KgF	0.73Kg-Cm ²	8-19 mm	2.8Kg	3.8Kg
PG110	12.0 kgF-M	24.0 KgF-M	320KgF	1.09Kg-Cm ²	10-24 mm	4.4Kg	5.5Kg

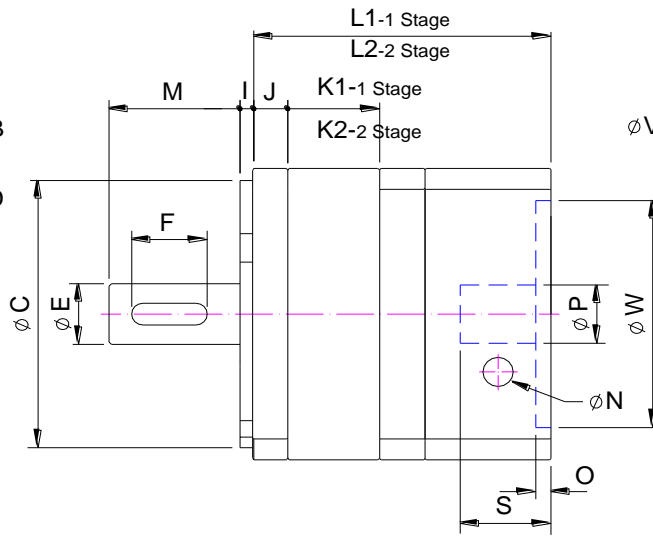
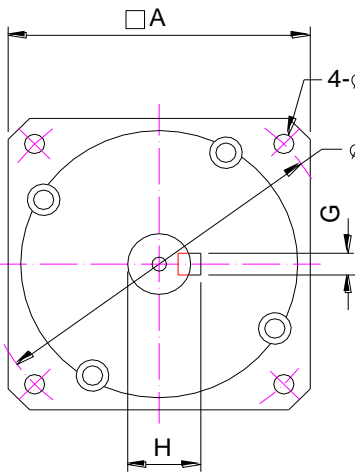
NOTE:

1. Above specifications are measured on 1 stage and 5:1 gear ratio basis.
2. For two stage models, the backlash will be 8 arc-minute unless otherwise specified

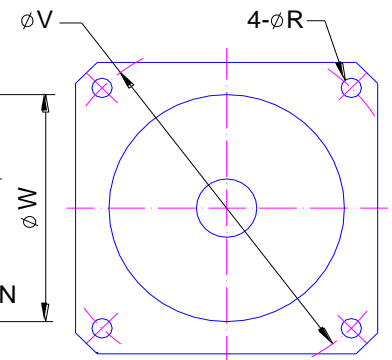
Excitron Planetary Gear Heads

GEAR HEAD PROFILE DIMENSION

GEAR HEAD
OUTLET DIMENSION



GEAR HEAD
INLET DIMENSION
(FOR MOTOR OUTLET)



Gear Ratio

Model	1 Stage	2 Stages
Any model	3, 4, 5, 7, 10	12, 15, 16, 20, 25, 30, 35, 40, 50, 70, 100
Backlash	3 ~ 6	5 ~ 8

Model	A	B	C	D	E	F	G	H	I	J	K1
	Square Flange Size	Bolt Hole Diameter	Pilot Diameter	Bolt Circle	Output Shaft Diameter	Keyway Length	Keyway Thickness	Keyway Height	Pilot Thickness	Input Flange Thickness	Recess Thickness
PG42	42	3.4	30	50	12	10	4	13.7	3	9	16
PG57	60	5	50	70	14	16	4	15.7	3	11	26
PG86	90	7	80	105	20	25	6	22.5	5	15	32
PG110	120	9	110	140	25	30	8	28.3	5	15	36.5

Model	K2	L1	L2	M	N	O	P	R	S	V	W
	Recess Thickness	Over Flange Length	Over Flange Length	Output Shaft Length	Lock bolt Hole Diameter	Motor Pilot Thickness	Motor Shaft Diameter	Bolt Hole Thread Size	Inlet Bushing Depth	Bolt Circle	Motor Pilot Diameter
PG42	33	56	73	20	4.5	3	5.0	M3	25		
PG57	51	76	101	25	6	4.5	.250"	M4	30		
PG86	63	96	126	40	8	6	.500"	M5	40		
PG110	70	117	153	52	12.5	7	.748"	M6	55		

Notes:

1. Please see www.excitron.com for stocked models and for pricing.
2. Complete part number is the Model with –gear ratio, for example: PG57-10 for 10:1 ratio.
3. Other dimensions can be altered for special requirement upon request.
4. Excitron reserves the right to alter specifications without prior notice.